

Apply for an Assistance Dog



1

Exchange Information

Fill out the online form to exchange information at cci.org/apply.



2

Complete Application

Complete the full application for a Canine Companions assistance dog.

4 to 6 weeks after request received

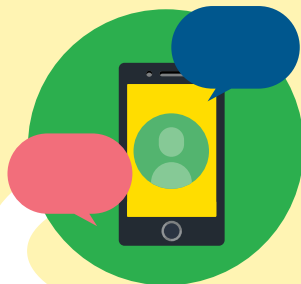


3

Telephone Interview

Talk with a Canine Companions staff member about needs and interest.

On average 3 weeks after application received



4

Medical or Professional Reference Forms

To be completed by your physician or therapist.

On average 2 weeks after interview



5

Personal Interview

Meet in person with a Canine Companions staff member to discuss interest and evaluate dog temperament needs.

On average 3 months after reference forms received

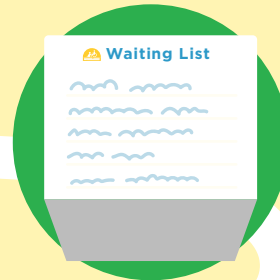


6

Selection Review

If accepted, qualified applicants receive acceptance paperwork and are placed on the waitlist.

2 to 4 weeks after interview



7

Invitation to Team Training

Join us at a 2-week Team Training class to be matched and train with your assistance dog.

On average 1 to 2 years after acceptance



Connect with Canine Companions

cci.org/apply

1-800-572-BARK (2275) • info@cci.org